



Steel Grating

Your trustable and loyal supplier

E-mail: info@bangtuwiremesh.com

Web: www.bangtuwiremesh.com

CONTENTS

HEBEI BANGTU WIRE MESH PRODUCTS CO.,LTD

Comany Profile----- 02

Workshop----- 03

Produce Process ----- 04

Specification----- 05

Quality Control ----- 06

Different Classifcation ----- 07

Installation of Steel Grating ----- 08

Installtion Fastener ----- 09

Application----- 10

Company Profile



WHO WE ARE

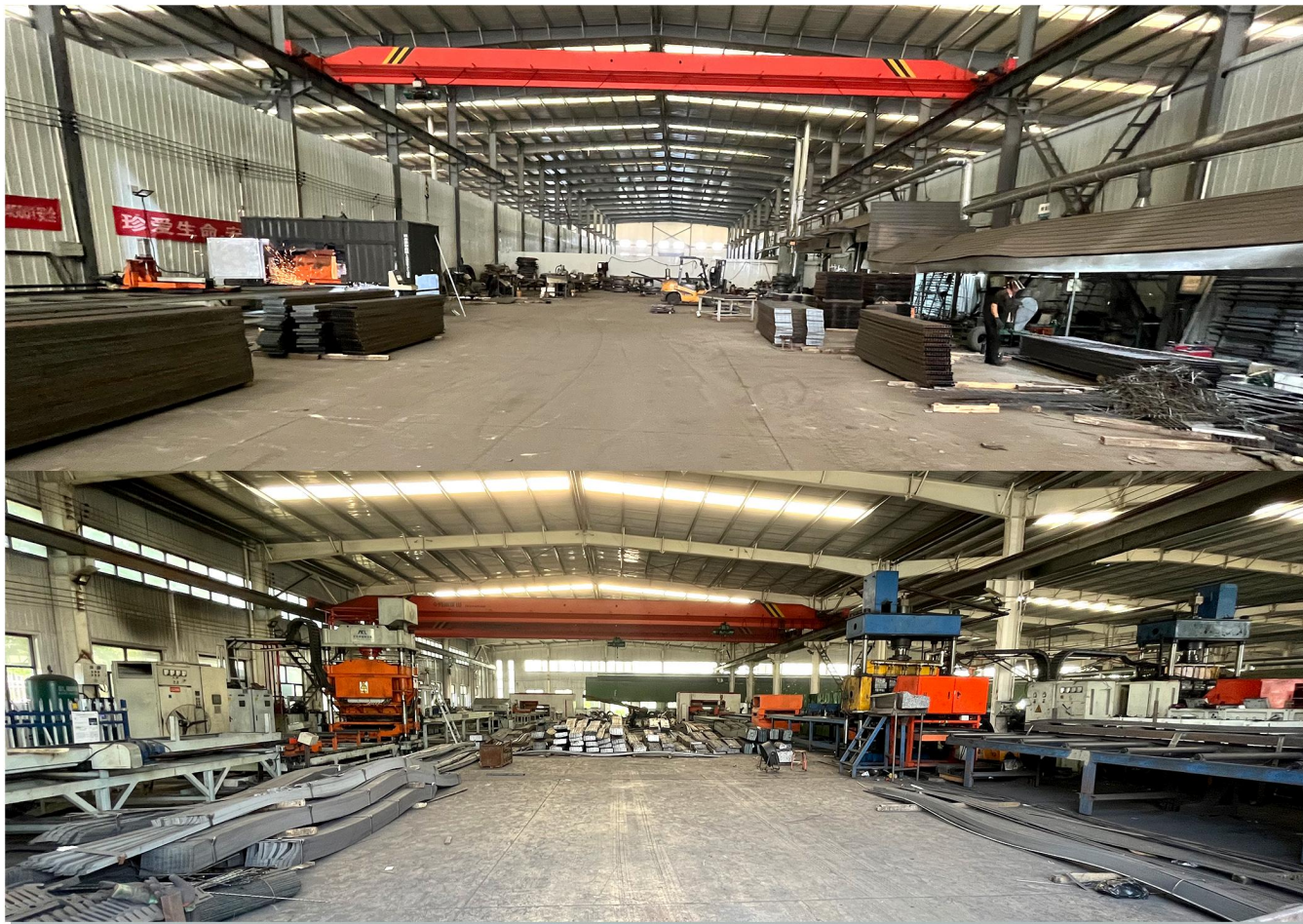
Hebei Bangtu Wire Mesh Co., Ltd is leading steel grating supplier in China. We have 17 years steel grating experience. We can supply various steel grating: HDG steel grating, stainless steel grating, press lock steel grating, trench cover, stair tread, etc.

Our company have 3 electric forging steel grating welding machines, which is best guarantee for your delivery time.

OUR VALUES

To provide customers with satisfactory quality products and services.
Give employees a sense of satisfaction and gain.
Let the company get long-term development.

Workshop



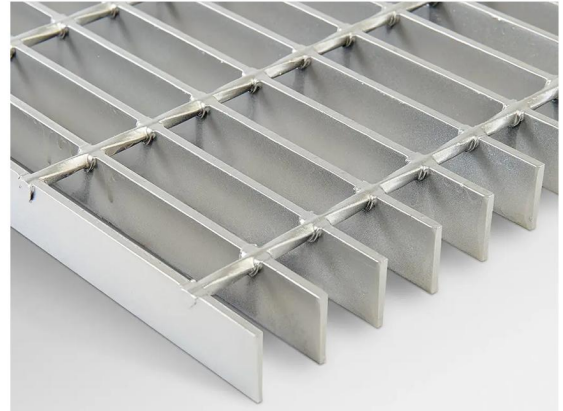
- 03** sets electric forging steel grating welding machines
- 17** years produce experience
- 90** tons daily output
- 87** export countries

Steel Grating

Steel grating is produced through automatically resistance welded. The bearing bars and cross bars are resistance welded under high heat and pressure to form a permanent joint. This technology can not only ensure the rugged structure of welded steel grating, but also can retain a smooth and flat surface, which is easy and free to walk.

Welded steel grating can be made of various materials, such as carbon steel bars, aluminum steel bars and stainless steel bars.

The bearing bar has two different types according to the surface: smooth bearing bar and serrated bearing bar. Smooth surface steel grating, also called plain steel grating, is more popular than the serrated surface steel grating. But the serrated steel grating have better skid resistance property than the smooth surface.



Produce Process



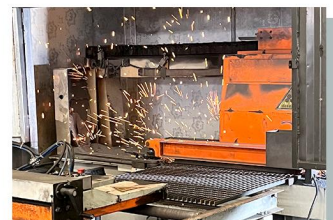
1.Bearing bar



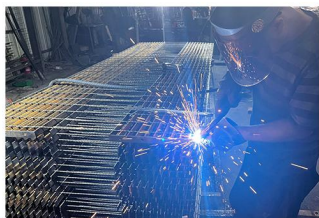
2.Cross bar



3.Welding



4.Cutting



5.End Plate Welding



6.Galvanized



7.Package

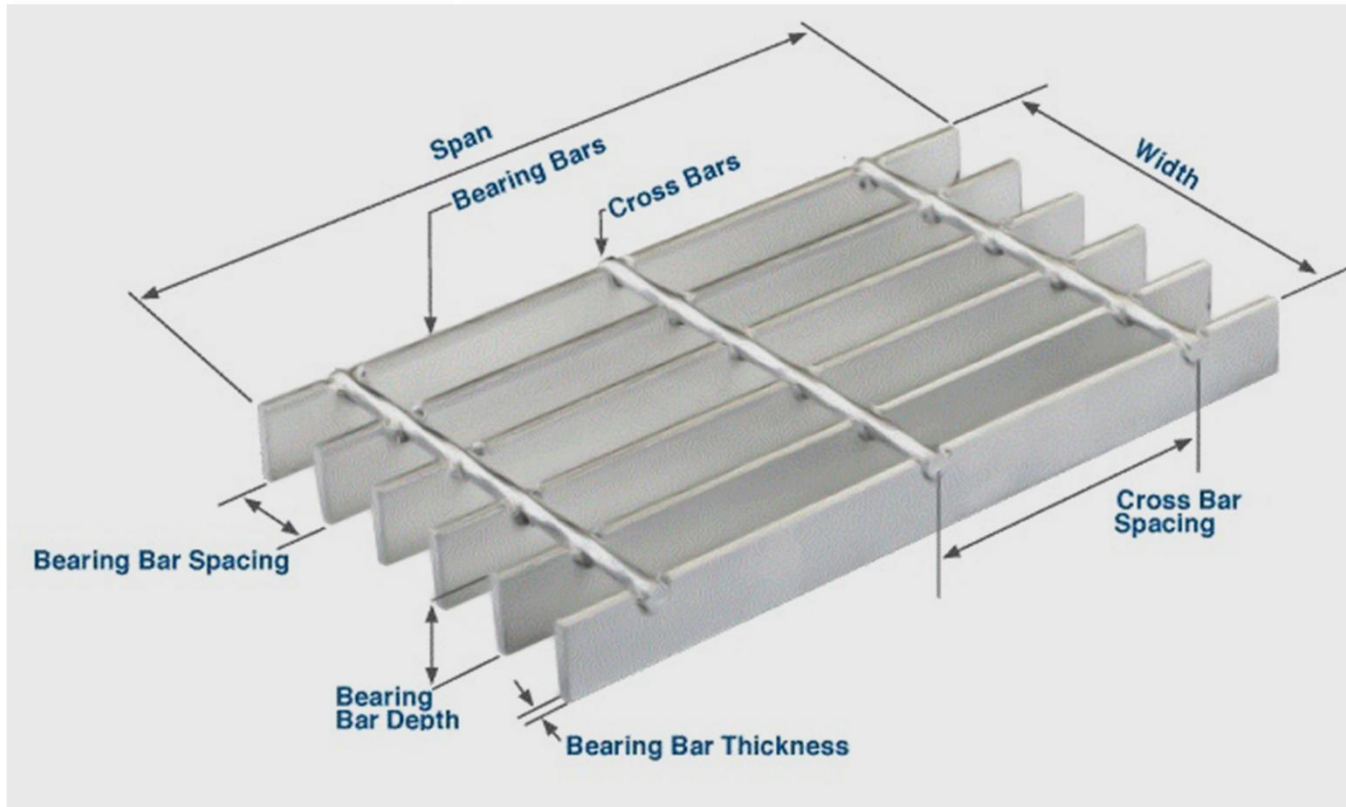


8.Loading

Specification

Specification of Steel Grating

Material Standard	ASTM A36, A1011, A569, Q235, S275JR, Stainless steel 304/316, Mild steel & Low carbon steel, etc
Bearing Bar (Width x Thickness)	25x3, 25x4, 25x4.5, 25x5, 30x3, 30x4, 30x4.5, 30x5, 32x5, 40x5, 50x5, 65x5, 75x6, 75x10.....100 x10mm etc; US standard: 1"x3/16", 1 1/4"x3/16", 1 1/2"x3/16", 1"x1/4", 1 1/4"x1/4", 1 1/2"x1/4", 1"x1/8", 1 1/4"x1/8", 1 1/2"x1/8" etc
Bearing Bar Pitch	12.5, 15, 20, 23.85, 25, 30, 30.16, 30.3, 32.5, 34.3, 35, 38.1, 40, 41.25, 60, 80mm etc. US standard: 19-w-4, 15-w-4, 11-w-4, 19-w-2, 15-w-2 etc.
Twisted Cross Bar Pitch	38.1, 50, 60, 76, 80, 100, 101.6, 120mm, 2" & 4" etc
Surface Treatment	Untreated(black), Hot-dipped galvanized, Electro galvanized, Painting or as per customers' requirement.
Package	(1) Bandage and Paperboard: Generally applies to neat steel plate; (2) Screw Locking Method: Use 4 screw rods through the aperture of the steel grid, for high strength; (3) Steel Pallet: Traditional export packing.

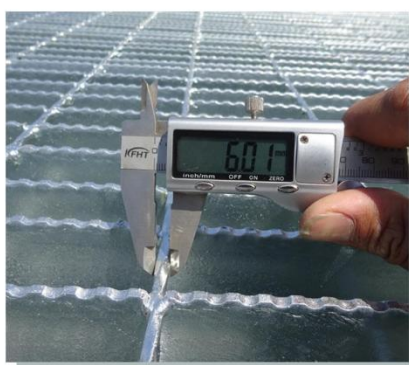


Quality Control

Our company prioritizes product quality above all else. We understand that delivering reliable and exceptional products is crucial for our customers' satisfaction and our reputation. Therefore, we maintain strict quality control measures at every stage of production. Our dedicated team ensures that each product meets the highest standards of quality, ensuring durability and performance. We continually strive to improve our processes and exceed customer expectations. Quality is the cornerstone of our company's success.

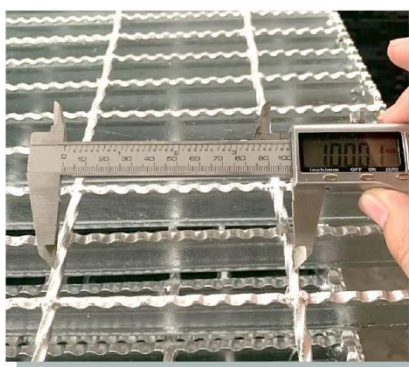
Step 1:

Material test: we will test the height/thickness of steel bar.



Step 2:

Test production: we will test cross bar pitch, bearing bar pitch, width, length, strength of the weld.



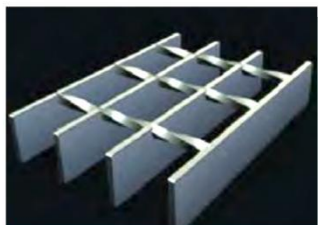
Step 3:

Test surface treatment: test thickness of zinc coated or printed.

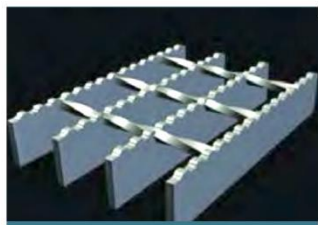


Different Classification

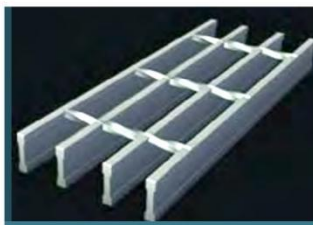
Bearing Bar Type



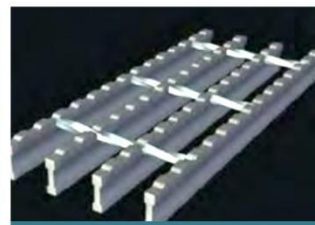
1.Plain



2.Serrated



3.I-shape

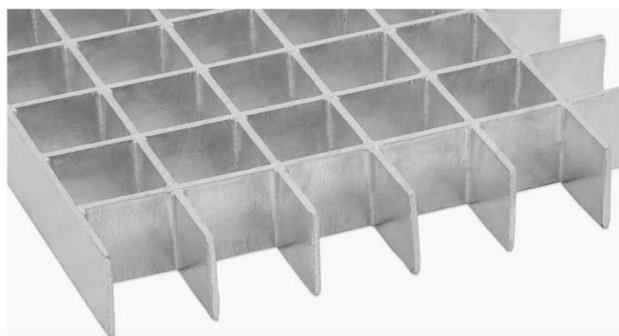


4.Serrated I-shape

Type of Grating



1.Welded



2.Press-Locked

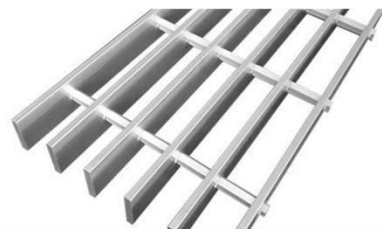
Material



1.ASTM A36



2. Stainless Steel

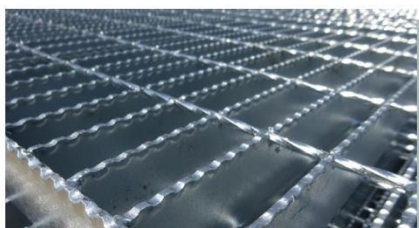


3.Aluminum

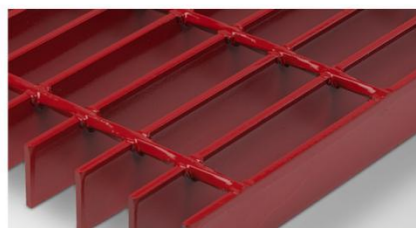
Finish



1.Untreated



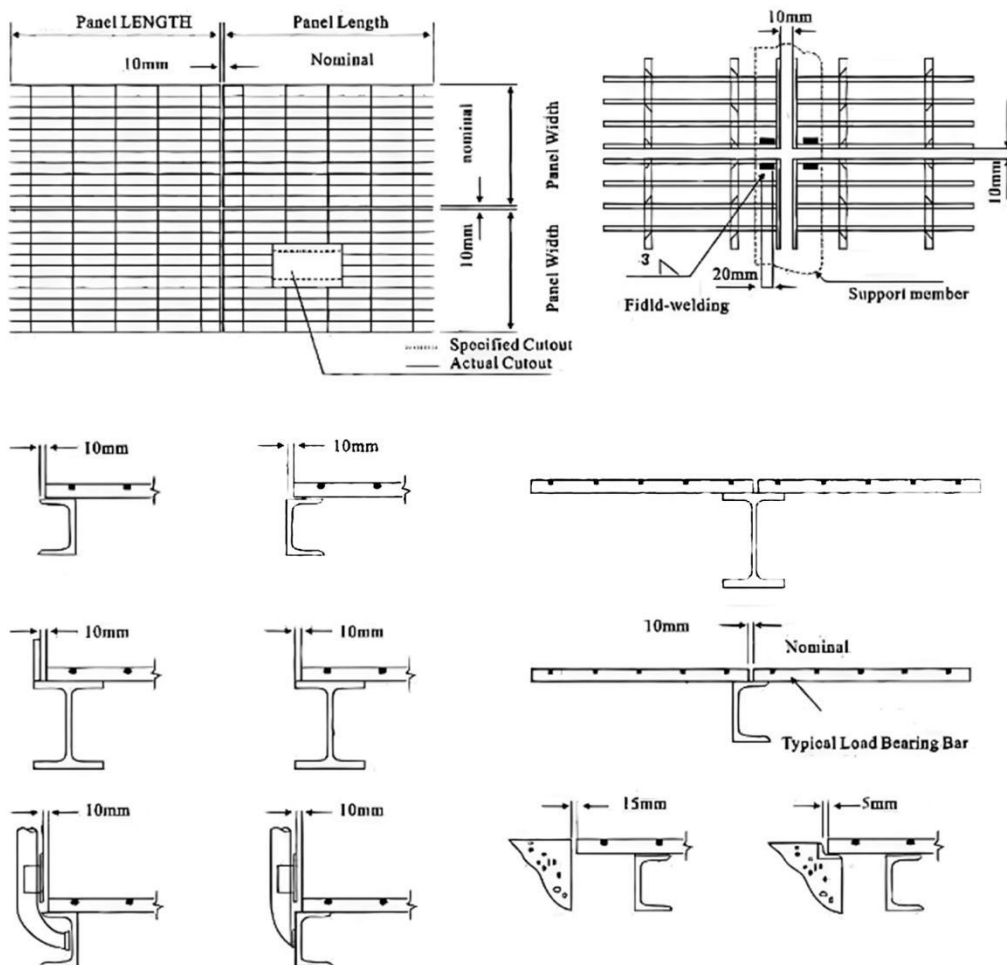
2.Hot Dip Galvanized



3.Painted

Installation of Steel Grating

- 1. Welding & using saddle clips are two ways for installation of grating .
The welding is suitable for those places where there is no need to move or dismantal, for instance, the flooring around the machines. However, using saddle clips are featuring in easy installation & saving zinc layer.
- 2. Regarding welding installation, angle wolding would be used at the first bearing bar of every corner, which the welding length is no less than 20mm, & the height is no less than 3mm.
- 3. Saddle clip composed of a top plate, a hold down & a M8 bolt, is suitable for all kinds of steel gratings installation.
- 4. Regarding saddle clip installation, at least four sets of saddle clips would be used in one pc grating. It woule be better using more in the staddle for thoes gratings with a bigger span.



Installation Fastener

We offer several different bar grating Grate-Fast anchor and clip configurations to meet the needs of a diverse selection of clients. The standard product features:

- A galvanized iron body
- A 13-gauge galvanized upper saddle that fits 1/4", 3/16" and 1/8" bearing bar sizes
- A 2 1/4" cap screw bolt for use with a range of bearing bar depths
- A stepped tail that fits beam flanges from 1/8" to 3/4"

Using Grate-Fast clips to install steel grating is easy:

- 1. Position the Grate-Fast so that the upper saddle rests on the grating's bearing bars, and arrow on the lower casting faces the structural steel beam
- 2. Slide the Grate-Fast forward until the lower casting's nose is positioned underneath the beam flange
- 3. Using a hexagon key, fasten the cap screw until the nose is securely torqued against the flange

From start to finish, the installation process takes only a few seconds. Grate-Fast clips can be easily removed and reinstalled using the same procedure.

■ Install Fastener



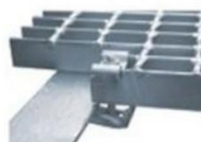
Type A

Type B



Type C

■ Installation Instruction



Type A



Type B



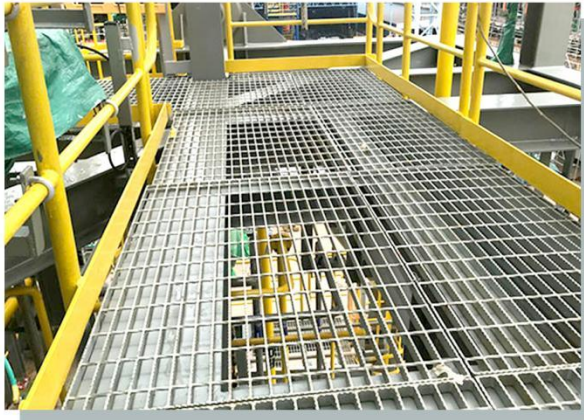
Type C



Application

■ Platform and Walkway Grating

Platform and walkway grating is widely used in the factories, walking street, parking lot, port, warehouse and other places to form a flat and open operating platform or walkway. Sometimes, the platform and walkway grating can be used combined with stair tread gratings for further application.

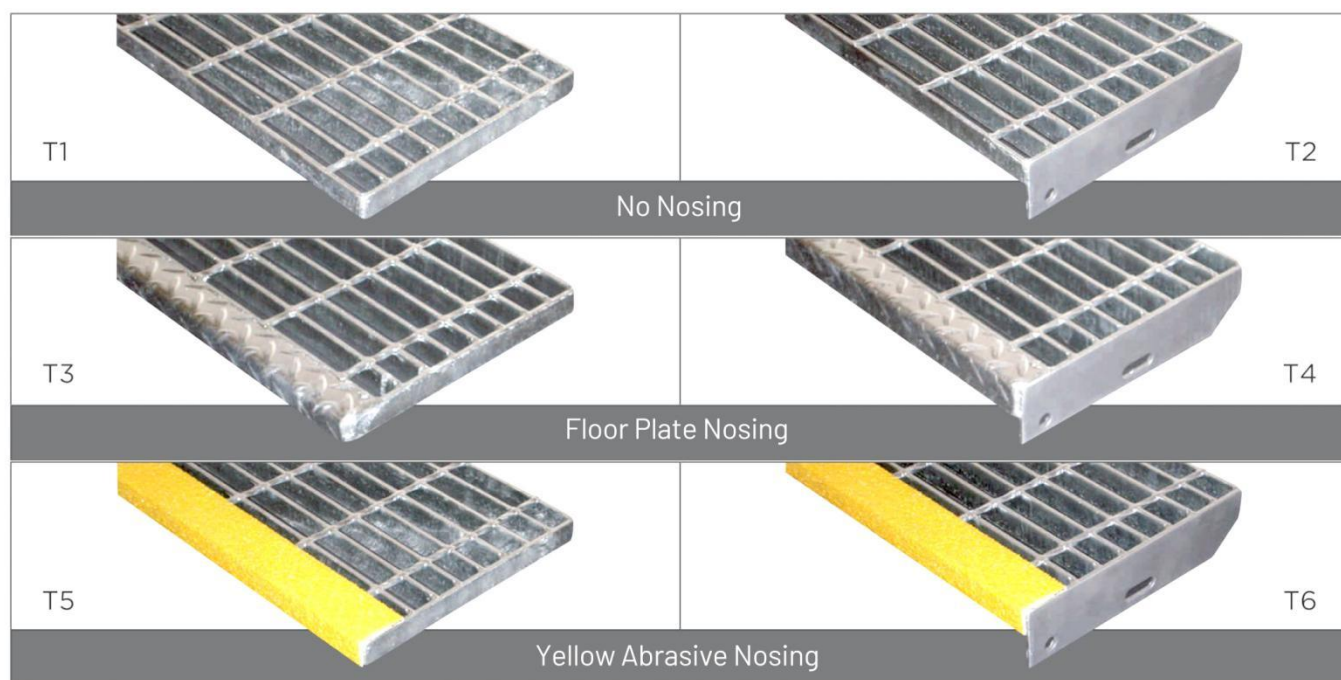


Application

■ Stair Tread Steel Grating

Stair tread steel grating is one of the most widely used application of steel bar grating. It can be installed in the factories or in the parks for the permanent or temporary using. We can supply you all kinds of steel grating for stair treads, we can also supply a complete solution for your projects.

Maximum Recommended Span				Recommended Width			
Load Bar	25 x 5mm	32 x 5mm	40 x 5mm				
Series 1	900mm	1300mm	1600mm	215mm	245mm	275mm	305mm
Series 2	750mm	1200mm	1500mm	205mm	245mm	285mm	325mm
Series 3	600mm	1200mm			245mm		305mm



Application

■ Drainage Trench Grating

Trench cover and Manhole cover combine our most popular gratings and embed frames to provide economic, modular components for construction projects. Grating trench cover and manhole cover used in walkway, carriageway, courtyard or other constructions. Used as cover for drainage trench , wireway, subway, air pit, etc.

■ GU Type

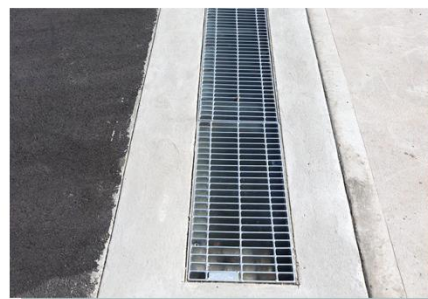
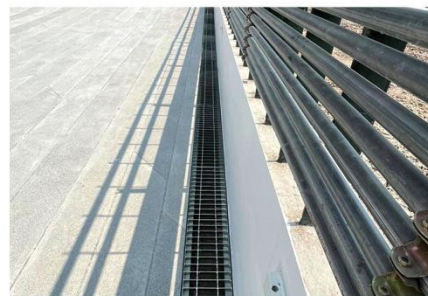
This kind of trench cover is used on ordinary side trench and transverse trench.

■ GT Type

This kind of trench cover can be directly built over U type trench without a frame or support.

■ GM Type

This kind of trench cover can be directly built over U type trench without a frame or support.





Factory Add: 150 Meters South of The Intersection of Hongqi Street and West Outer Ring Road, Anping Town, Anping County, Hengshui City, Hebei Province, China.

Office Add: 1906, Office Building No. 2, Jiahe Plaza, No. 569, East Zhongshan Road, Tangu Street, Chang an District, Shijiazhuang, Hebei, China.

TEL: +86-311-85676910

Phone: +8613363180165

E-mail: info@bangtuwiremesh.com

Web: www.bangtuwiremesh.com